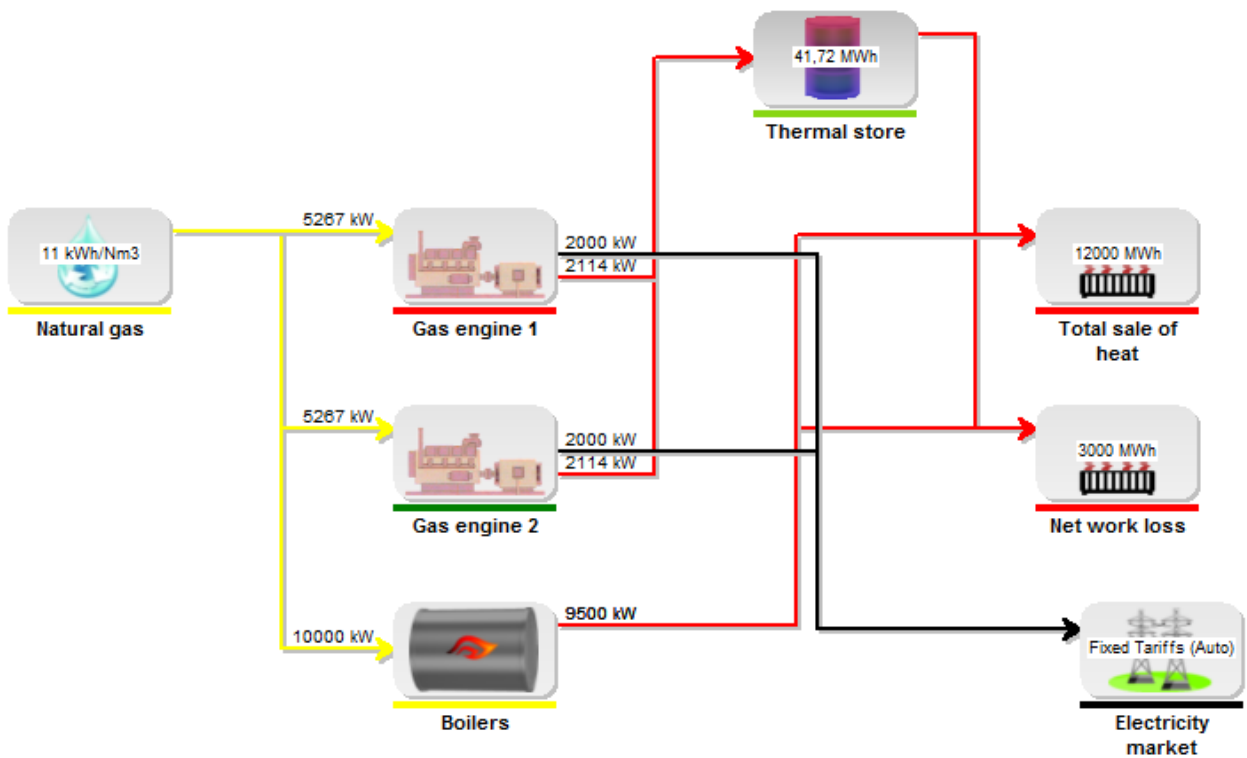




Getting started

energy PRO



Start energyPRO

Start from the shortcut on the desktop

When installing energyPRO a shortcut is automatically placed on the desktop.



The program is default installed in your program folder e.g.

C:\Program Files\EMD\energyPRO 4\energyPRO4.exe

Study energyPRO projects

Start your experiences by studying project examples

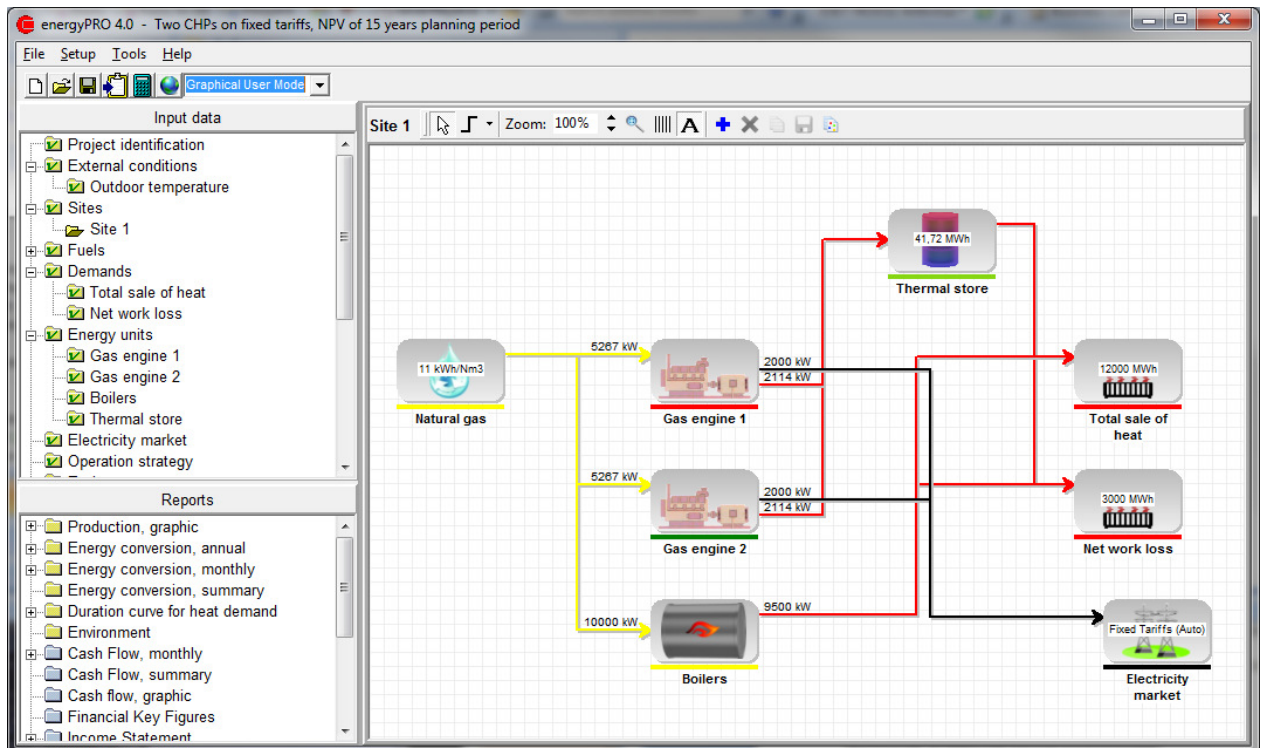
The best way to get familiar with energyPRO is to load one of the existing examples, which is included in the energyPRO software package. The examples are default placed in a folder, e.g.:

C:\energyPRO data\English\Project examples.

English\Project examples is country specific depending on the computers Windows language. The first time energyPRO is started it suggests finding the files in this folder.

Choose "File", "Open" and choose one of the examples you see.

The graphical user mode makes it easy to edit the data and maintain an overview.



Open the examples and look into the first input window (called "Project identification" in English) for a short description of the examples. Here you can also see if the example is a DESIGN, FINANCE or ACCOUNTS project.

The modules are used for different tasks

The Modules are used for different tasks. DESIGN is used for making energy conversions and calculating the operation income for a single

year by including revenues and operational expenditures. FINANCE is used for economic key figure analysis and generation of cash flow reports when including the investments and financing costs for the energy project. ACCOUNTS is used to include depreciation and taxation into your project calculations and generates detailed income statements and balance sheets for each year in the defined project period for long term budget for Heat, Cooling and Power Plants. The FINANCE and ACCOUNTS calculations can include more than 20 years of cash flows on a monthly basis, income statements and balance sheets.

For most users it would be advisable to start studying DESIGN examples, then the FINANCE, and finally the ACCOUNTS examples. For more information about the content of and differences between the modules we refer to the on-line help, the manual or the module descriptions found on our homepage.

Check all the input folders and the choose the different report folders

When you have loaded an example take a tour round the desktop and take a look in all the different input folders defining the project. E.g. in "Reports" choose the print out "Productions graphical" where you graphically overview the whole year. In the printout, you see in which periods the energy units are producing and how e.g. a heat accumulator is used.

Creating a new energyPRO project

Often it is wise to start creating a new project by modifying a project example or an old project

Often it is wise to create a new project simply by loading an existing project, modifying it and saving it with a new name.

If you want to create new project from scratch choose "File" and "New". The first thing to do in a new project is to choose the project type in the "Project identification". When you have chosen either DESIGN, FINANCE or ACCOUNTS, the relevant folders in the input data folder structure will appear and you can start to fill in data.

Help is activated by choosing the F1-button or by the Help menu

HELP

It is recommended to use the HELP-system for detailed information throughout the program. Use the F1-key to start the HELP and you will get an explanation related to the window you are working in.

Alternatively, choose Help in the top menu. See especially the chapter "Operating in energyPRO", which gives you the necessary instructions for navigating in the program.

Until registered energyPRO will be operating in demo mode

DEMO-version

If you are working with the demo version of energyPRO, you will find some restrictions using the program, but you should still get a good opportunity to see the facilities in energyPRO.

If you open a project file in the DEMO version, the project will be in READ ONLY mode. This means you can see all input data and print out all reports, but you can't alter any of the input data.

If you want to switch the program into DEMO-mode, you just choose "Set up" and "DEMO mode". Now you can alter the input data, but you can't save your editions and the reports are overwritten with the text "DEMO-version".

Language

EnergyPRO is currently

The program will start with the same language as used by the Windows

maintained in the following languages. English, German, Danish, Polish, Lithuanian.

version, which is installed in your computer (if the language is available for energyPRO - otherwise in English). If you want to change the language, choose Language in the main menu, select the wanted language and restart the program. If you do not have license to the selected language, energyPRO will start in DEMO-version.

EnergyPRO is currently maintained in the following languages. English, German, Danish, Polish, Lithuanian.

EMD International A/S
Niels Jernesvej 10
9220 Aalborg Ø
Denmark
Tel.: +45 9635 4444
Fax: +45 9635 4446

Homepage : www.emd.dk
e-mail : emd@emd.dk

Please contact us for further information.