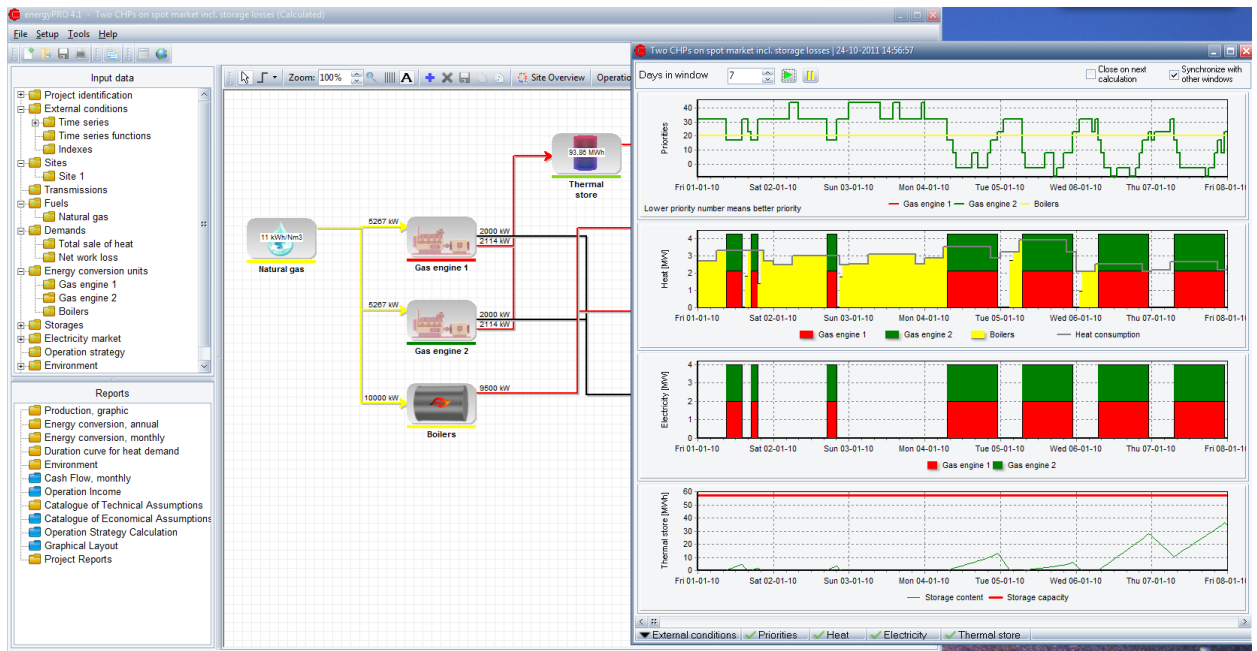




# New user interface

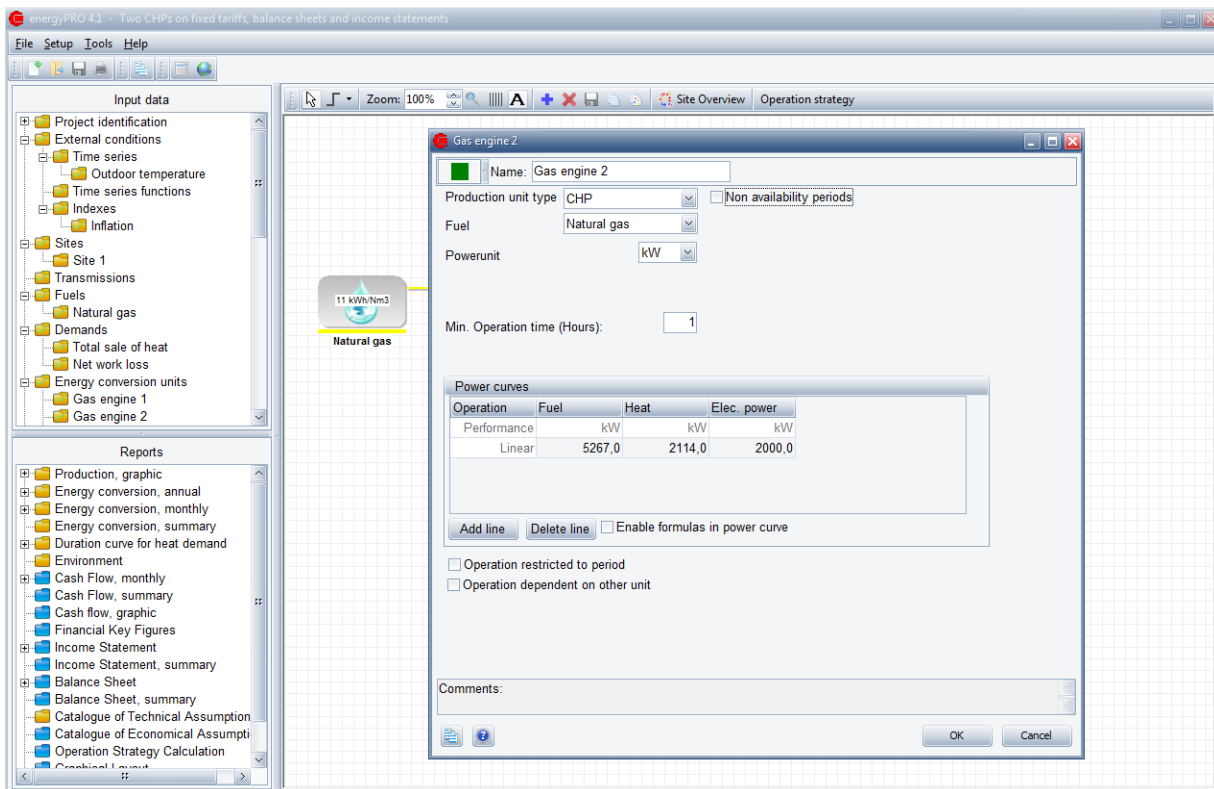


## 1. Introduction

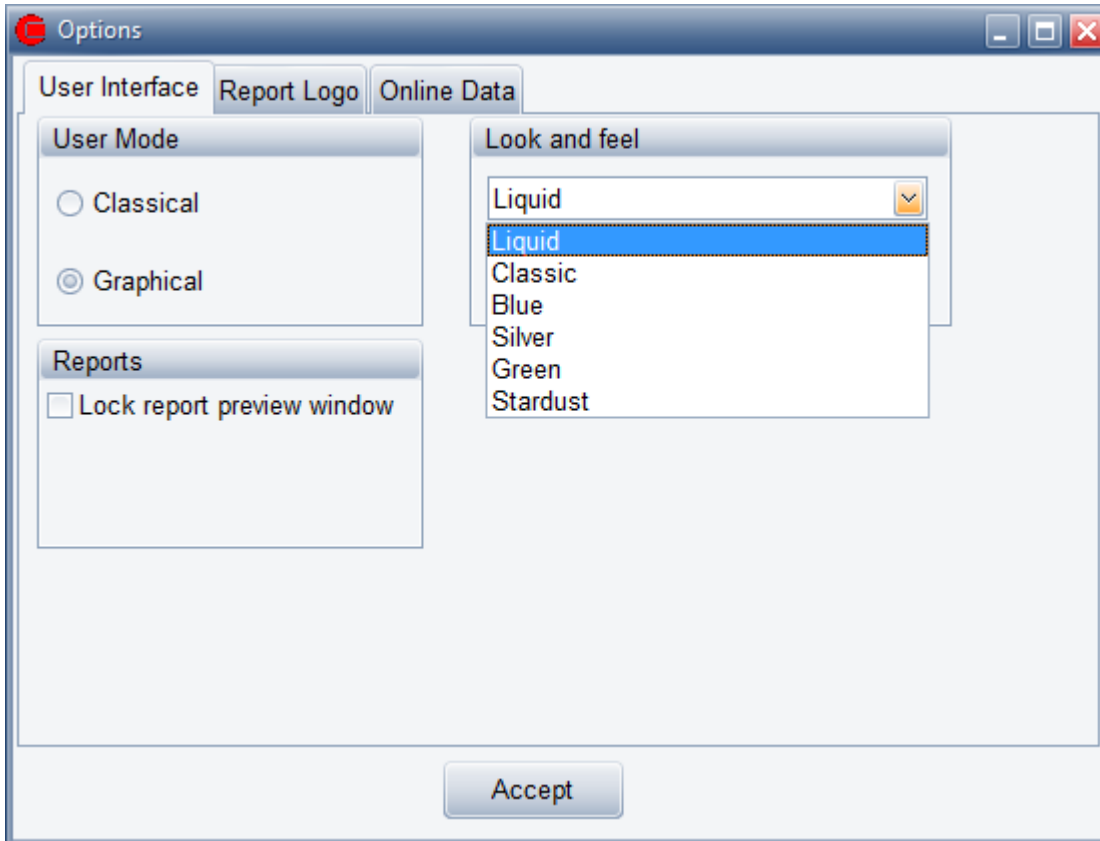
With energyPRO 4.1.2 we introduce a new user interface. This also means a number of improvements in the program, which will be described in this paper.

## 2. New user interface

We have made a new look of the user interface. The default look is Liquid:

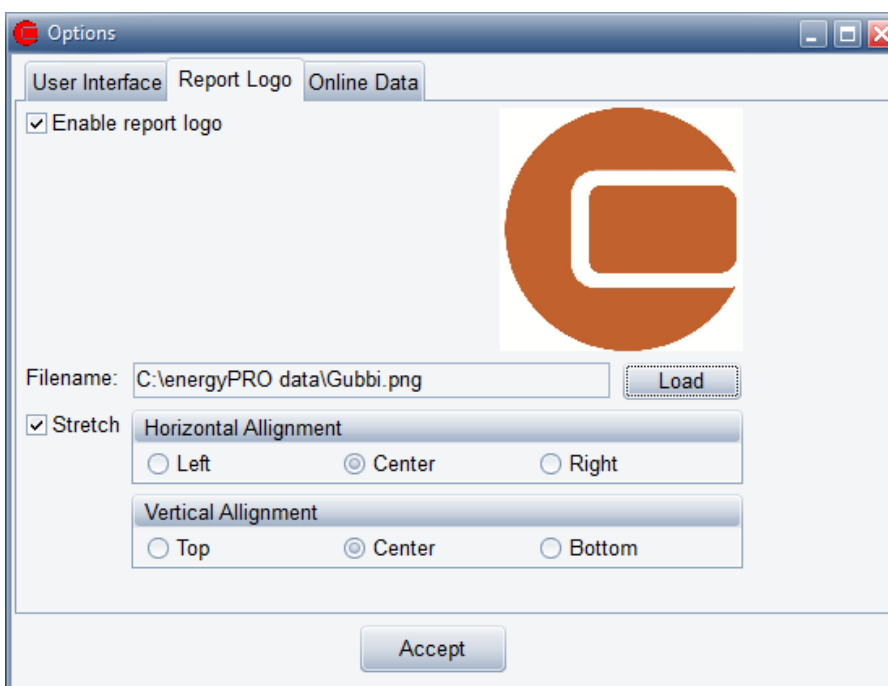


You can change the look at Setup – Options – User Interface:



### 3. Report Logo

If you want to personalize your report you can add your company logo to the report.  
Go to Setup – Options – Report Logo:



## Changes in input windows

The logo will now appear on all the reports:


### Two CHPs on fixed tariffs, balance sheets and income statements

This example illustrates a cogeneration plant selling and buying its electricity on a fixed tariff market with income statements and balance sheets for a 15 years period.

energyPRO 4.1.2.111

Printed Page  
20-10-2011 14:51:26 / 1

Licensed user:  
**EMD International A/S**  
Niels Jernesvej 10  
DK-9220 Aalborg Ø  
+45 9635 4444



---

### Energyconversion, annual

Calculated period: 01-2011 - 12-2011

<b>Heat demands:</b>		
Total sale of heat	12.000,0 MWh	
Net work loss	3.000,0 MWh	
Total	15.000,0 MWh	
Max heat demand	4,2 MW	
<b>Heat productions:</b>		
Gas engine 1	10.132,4 MWh/year	67,5 %
Gas engine 2	4.304,1 MWh/year	28,7 %

## 4. Changes in input windows

Time series are now shown with one column for both date and time.

#### Time series

Symbol:

Unit:

#	Date	EEXP2010 [EUR/MWh]
1	01-01-2010 00:00:00	26,2500
2	01-01-2010 01:00:00	18,4600
3	01-01-2010 02:00:00	20,0800
4	01-01-2010 03:00:00	16,9900
5	01-01-2010 04:00:00	15,9200
6	01-01-2010 05:00:00	7,9900
7	01-01-2010 06:00:00	0,4700
8	01-01-2010 07:00:00	4,0100
9	01-01-2010 08:00:00	1,0800
10	01-01-2010 09:00:00	8,0100
11	01-01-2010 10:00:00	8,8500
12	01-01-2010 11:00:00	18,8200
13	01-01-2010 12:00:00	21,6000
14	01-01-2010 13:00:00	18,8200
15	01-01-2010 14:00:00	17,7900

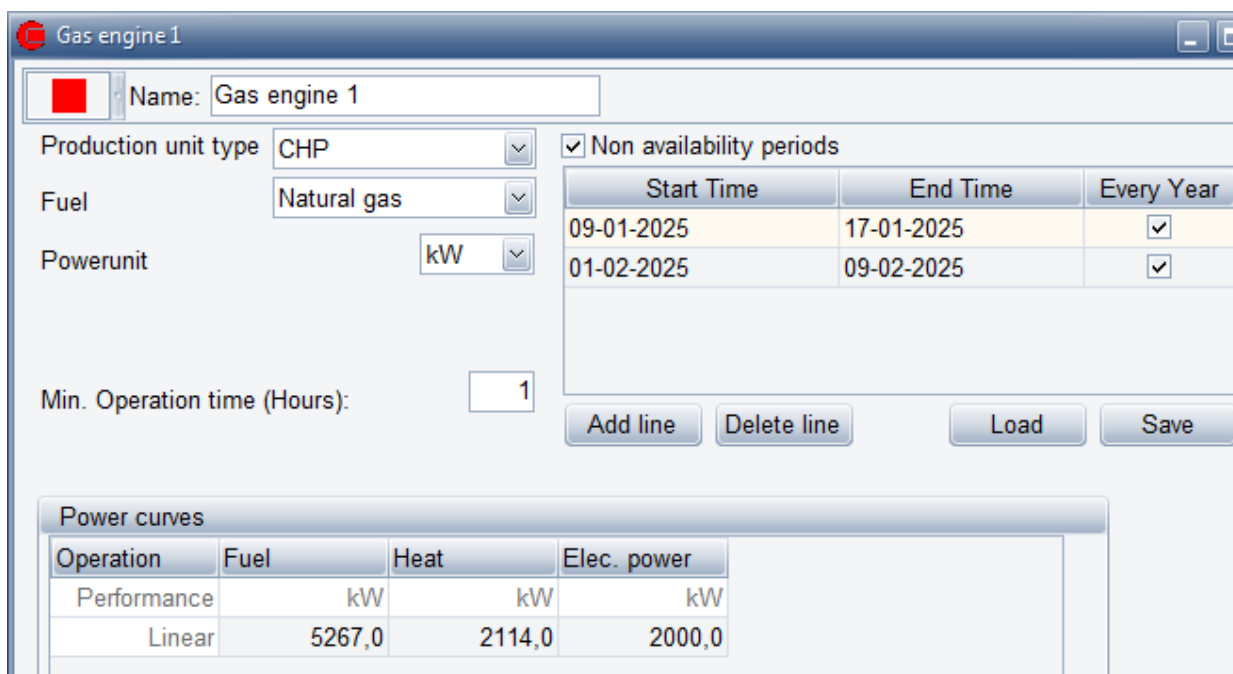
Add lineDelete line

When pasting data from e.g. a spreadsheet your original data can either be in two or three columns:

Date	Time	Value	Date and Time	Value
01-01-2010	00:00:00	26,25	01-01-2010 00:00	26,25
01-01-2010	01:00:00	18,46	01-01-2010 01:00	18,46
01-01-2010	02:00:00	20,08	01-01-2010 02:00	20,08
01-01-2010	03:00:00	16,99	01-01-2010 03:00	16,99
01-01-2010	04:00:00	15,92	01-01-2010 04:00	15,92
01-01-2010	05:00:00	7,99	01-01-2010 05:00	7,99
01-01-2010	06:00:00	0,47	01-01-2010 06:00	0,47
01-01-2010	07:00:00	4,01	01-01-2010 07:00	4,01

It is now possible to save The Non availability periods in energy units and subsequently load it for use in another energy unit.

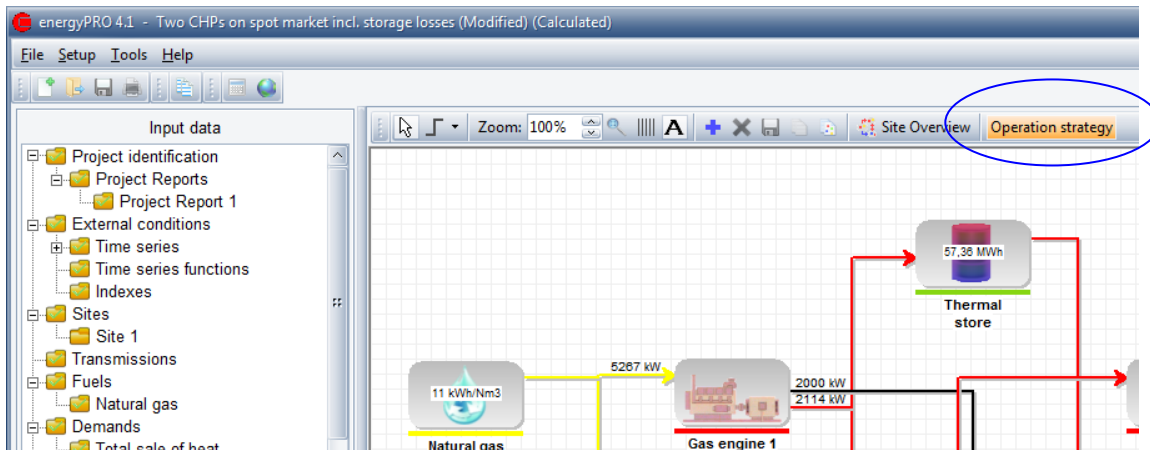
If you have calculations running a number of years the non availability periods can be specified to a single year or every year.



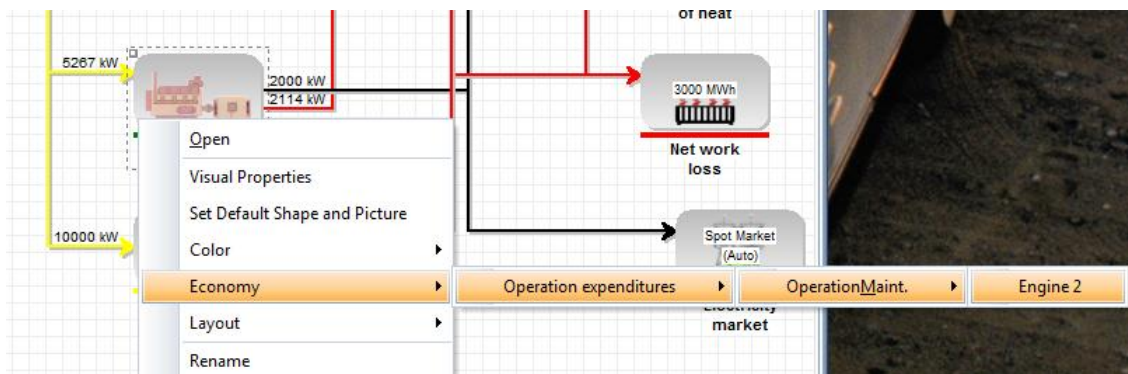
## 5. Shortcut to Operation strategy and economy

The operation strategy is the core element of any energyPRO project. Since you often need to enter the Operation Strategy we have made a shortcut:

## Project report



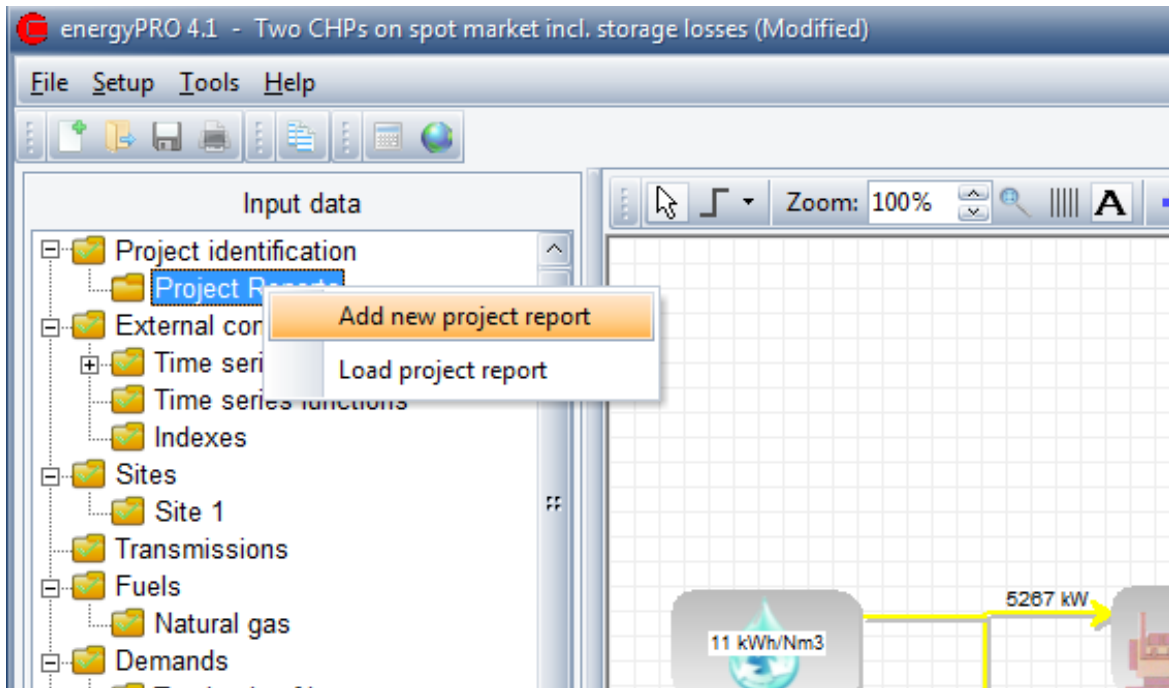
Right click an energy unit and you have a shortcut to the payments concerning the unit:



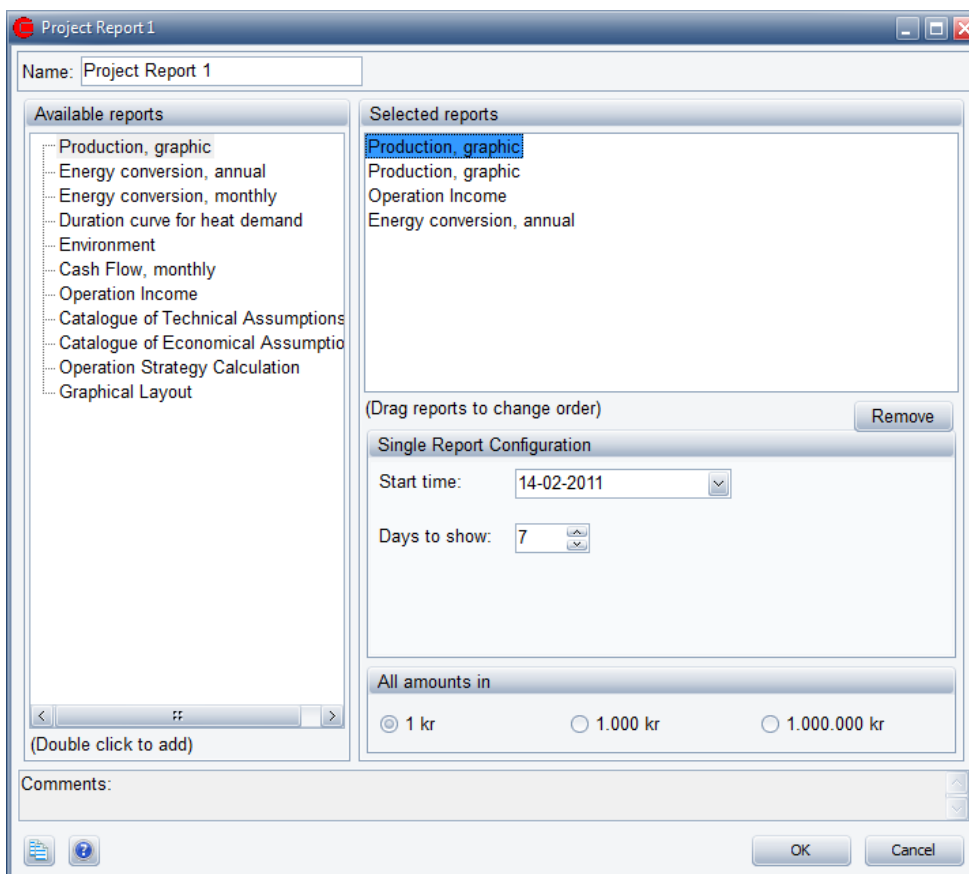
## 6. Project report

Under Project identification in the input data you can add or load a project report.

## Project report



A project report is basically a collection of reports.

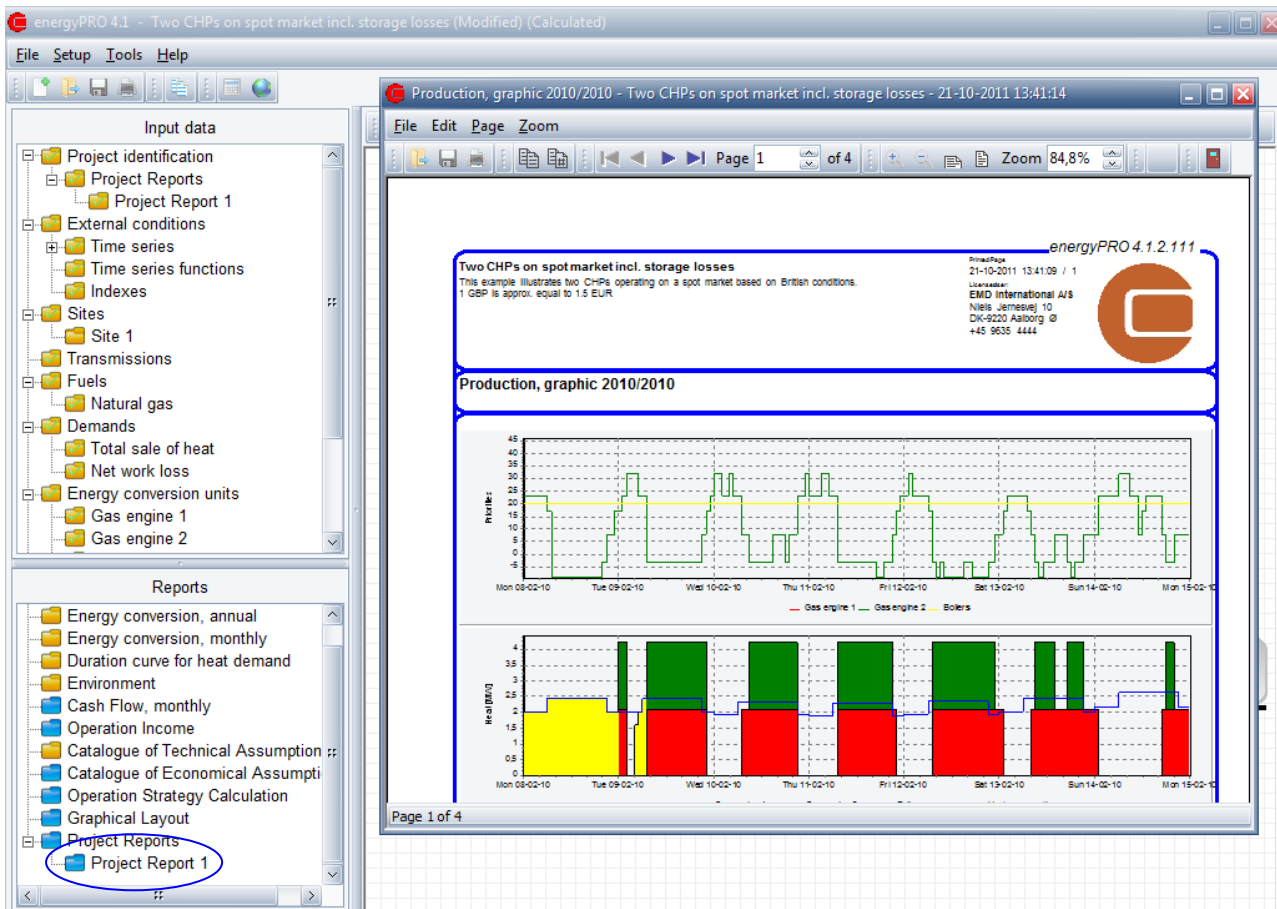


You can add any number of the available reports. As example, you want to show Production, graphic for a week in the winter time and for week in the summer time.

## More reports open at same time

You can have as many project reports as you want.

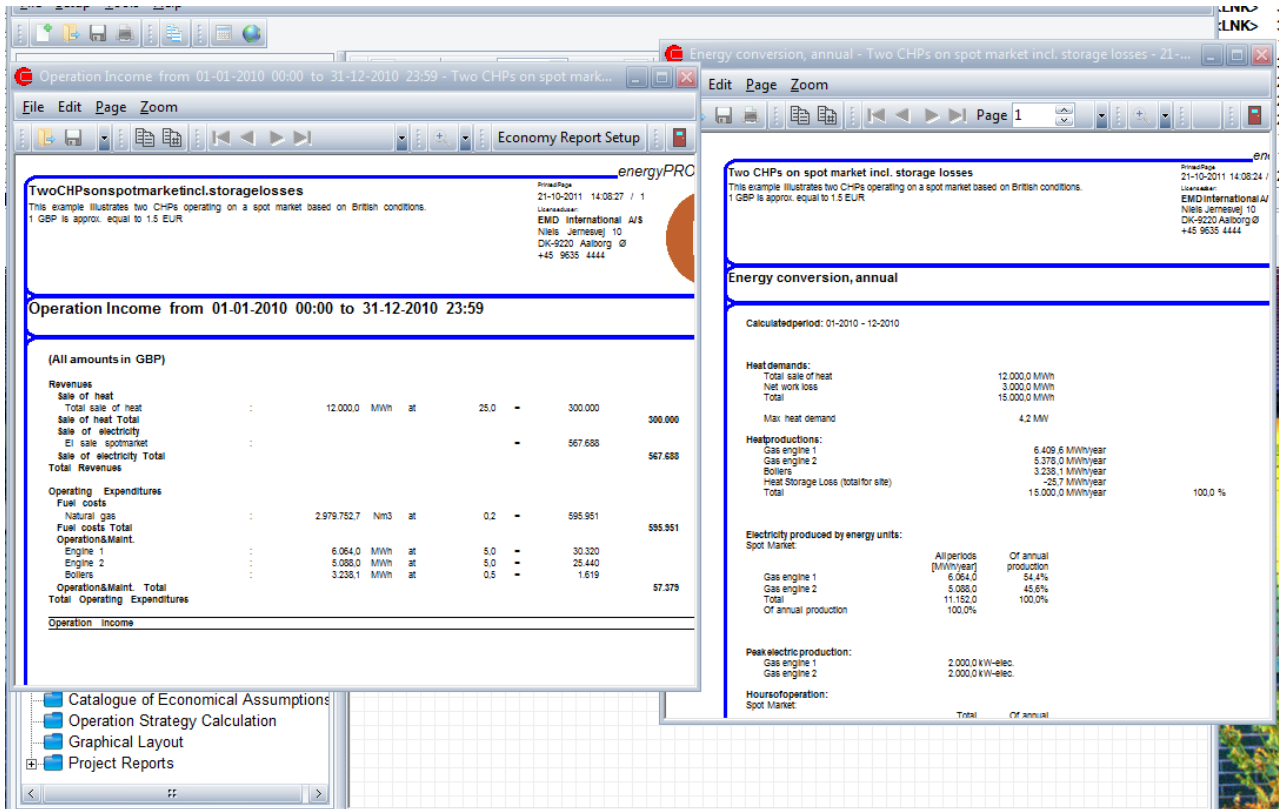
When you are finished designing your project report you can click the report and have a preview:



## 7. More reports open at same time

You can have a number of reports from the project open at the same time. This is useful, if you want to compare the energy conversion with the economic results, like shown in the screenshot below.

## More reports open at same time



Or you can use it for comparing a reference calculation with an alternative.

Also the production, graphic can be shown in several windows. Simple press the New Window button:

