



SHARING AND VIEWING A WINDPRO PROJECT ONLINE IN 3D

Purpose:

A windPRO project can easily be shared as an interactive 3D model, ready to open in a web browser. This quick guide shows you how to export, upload, view and share a 3D model of your windPRO project.

CONTENTS

SHARING AND VIEWING A WINDPRO PROJECT ONLINE IN 3D1

1. Requirements.....1

2. Examples1

3. Export windPRO project to SketchUp2

4. Create scenes for the model2

Create the online version3

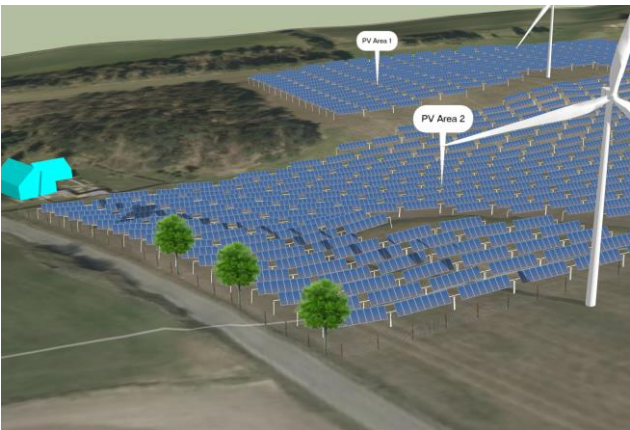
1. REQUIREMENTS

To show a windPRO project in 3D in a web browser requires a windPRO license to the SketchUp Integration Module and a user account to Trimble (3rd party).

If you don't have a license for the Integration module in windPRO, you can contact sales@emd.dk to get a trial license.

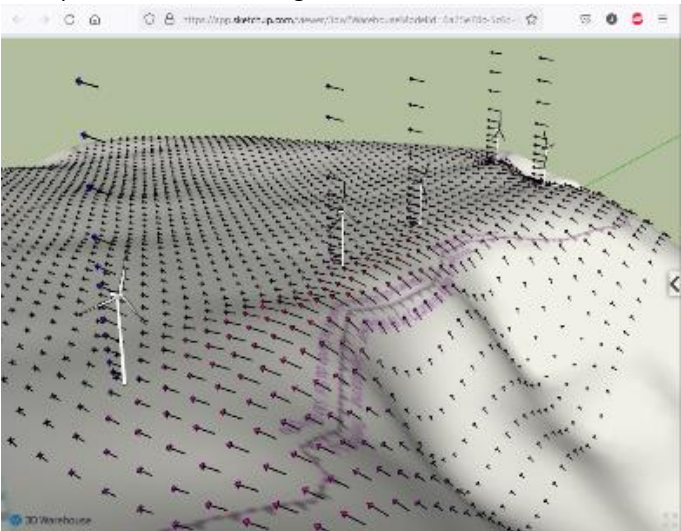
2. EXAMPLES

Example of a site containing a solar power plant:



<https://app.sketchup.com/viewer/3dw?WarehouseModelId=f91f2571-e5b1-4010-8468-4718ecb858f5>

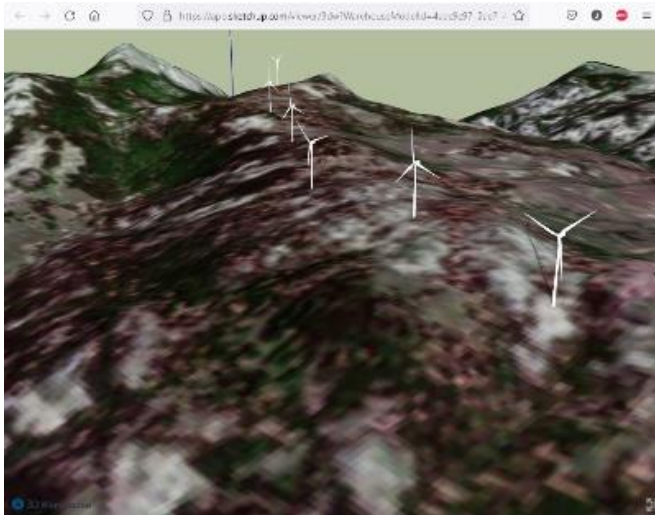
Example of a site containing CFD results:



<https://app.sketchup.com/viewer/3dw?WarehouseModelId=6a75e78c-5c6d-4875-b2fe-061cb3820938>

Example of a site containing shadows, multiple scenes and section cuts in result layers:

Quick Guide – Sharing and viewing a windPRO project online in 3D



<https://app.sketchup.com/viewer/3dw?WarehouseModelId=4aac9c97-2ae7-4d5c-85a4-30c3aacff56f>

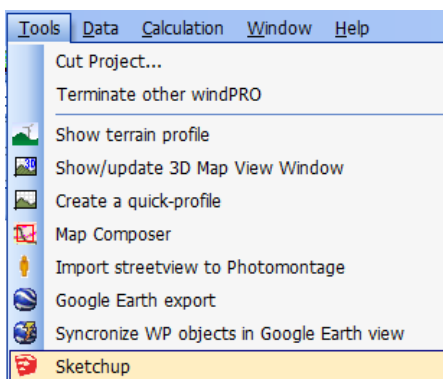
Try to open above links and navigate in the model using the mouse and mouse scroll. Different views (Scenes) of the project models can be selected from the menu in the right side of the model area:



3. EXPORT WINDPRO PROJECT TO SKETCHUP

SketchUp Make 2017 is free for non-commercial use and can be installed for evaluation purposes, and it has all the needed functionalities. The procedure is quite simple once SketchUp is installed, and it requires no SketchUp skills.

Open the exporter tool in windPRO from the Tools menu:





Create and run the exporters you want, to create a 3D model of your project. In case you have never used SketchUp or the SketchUp Integration Module before, follow the guidelines from the [Quick guide to SketchUp Integration Module](#) to create a SketchUp version of the windPRO project.

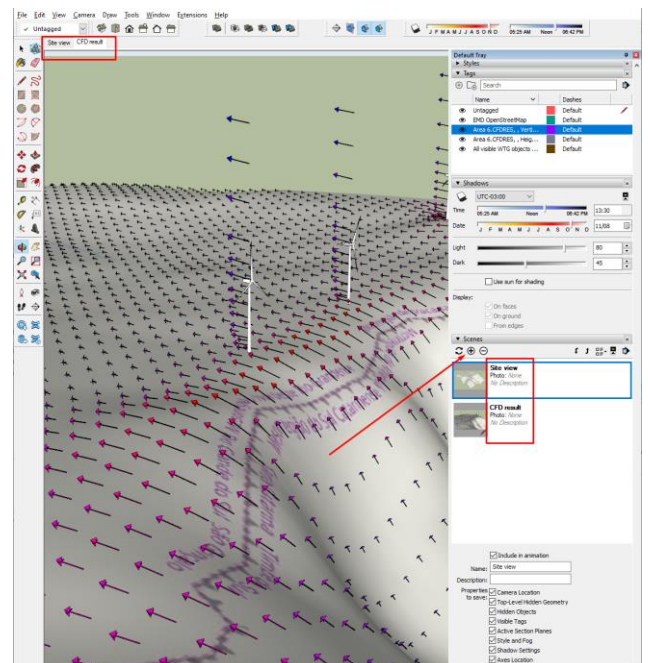
4. CREATE SCENES FOR THE MODEL

Once the desired elements from windPRO is exported to SketchUp, you can set up some scenes. This is optional, but very helpful (see the examples shown on page 1).

A scene mainly defines a camera viewpoint, but also it defines which layers (tags) and section cuts should be visible and the painting style. When sharing the model (or when saving it as .kmz for Google Earth) these Scenes is available for the viewer.

Use the orbit tool  to orient the view angle.

Select what layers (tags) that should be visible and click the  button to save the settings as a Scene:



Also, section cuts can be created and activated from the tools menu, and saved with a Scene.

Quick Guide – Sharing and viewing a windPRO project online in 3D

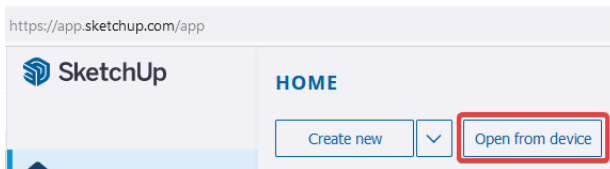
CREATE THE ONLINE VERSION

The process is quite simple. Just open the model in the online SketchUp editor and press the share button, like this:

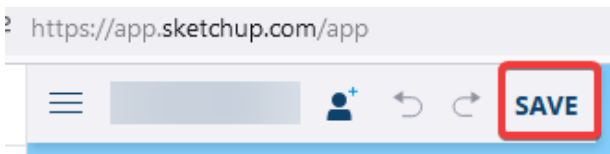
Open online editor link: <https://app.sketchup.com/app>

You can use your Google Account or create a free Trimble account.

Select Open from Device and load the project created in the previous steps:



Then save the model (this stores the project in the cloud):



Now press the share button and get the link:

